

PUR ITY DE IVE RED

KEYNOTE

CROWN PURETECH is an ISO 9001: 2015, 14001: 2015 Certified, and CE Certified Company. We are in a Technical Association with CWG Water Treatment (P) a subsidiary of CWG GmbH – Germany. Crown Puretech aims to flourish in the sector that concerns water preserving and conserving products.

Crown Puretech specializes in the design, manufacture, and export of a diverse range of water purification systems, including solutions for potable and non-potable water, groundwater treatment, waste water treatment plants, swimming pools, wellness spas, water features, wildlife life support systems, and utility water treatment. We expertise in turnkey solutions, as well as refurbishing, revamping, retrofitting, and capacity enhancement of existing systems. Our core competencies also include reverse engineering, troubleshooting, and providing comprehensive Annual Maintenance Contracts (AMCs) and Operation and Maintenance (O&M) services, ensuring our clients receive reliable, efficient, and sustainable water management solutions tailored to their needs.

Our ongoing pursuit is driven by our commitment to customer satisfaction through continuous innovation, cost-efficiency, and advanced technology. Our mission is to lead globally in water treatment solutions, delivering sustainable and reliable systems and services. We envision a future where water is more valued as a precious resource, with our solutions at the forefront of sustainable water management worldwide.

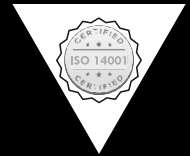
"Crown Puretech is intensely devoted to excellence in their work by being tremendously professional and caring in every aspect of the agreed contract."

When Excellence flows in every drop, you know its
CROWN PURETECH!

ISO 9001 : 2015



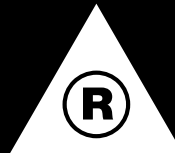
ISO 14001 : 2015



MAKE IN INDIA



CE CERTIFICATE



IP REGISTERED



MSME REGISTERED



FOCUS ETHICS



QUALITY ASSURANCE

We have advanced machining equipment, a rigorous quality control system, a perfect after-sales service system, advanced innovation awareness, and ability.



EXCEPTIONAL ASSISTANCE

Our core enterprise spirit lies in giving utmost personal attention to each client. We strive on the assurance of giving articles and advice that are reliable and worthy.



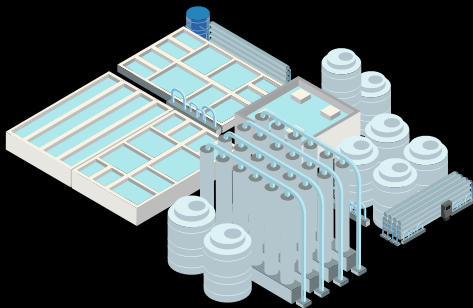
SUSTAINABLE MEANS

We take responsibility for contributing to global sustainability by pioneering technologies that improve the quality of life for people and care for the planet.

TREATMENT SYSTEM DOMAIN

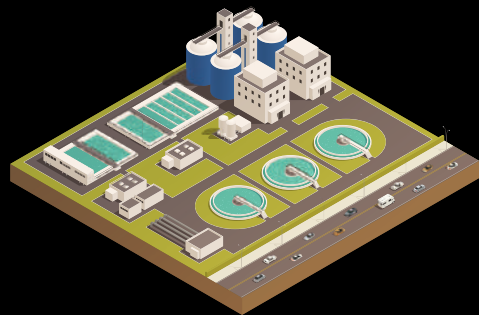
WATER TREATMENT

Crown Puretech delivers water treatment plants and systems for utility or drinking water, that is installed for residential, commercial and industrial applications



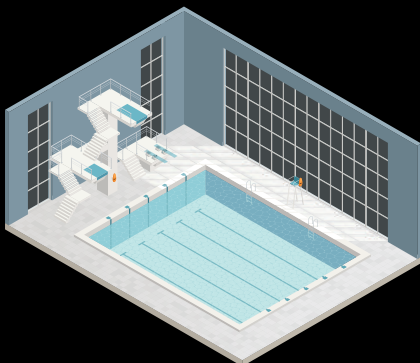
WASTE WATER TREATMENT

Crown Puretech maintains and installs waste water treatment plants and systems for sewage, grey or effluent waste water, where treated water can be reused and recycled



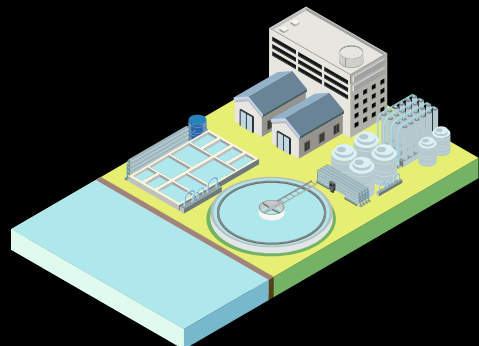
SWIMMING POOL

Crown Puretech creates and operates swimming pools, water features and fountains, artificial ponds and water bodies, water park filtration and treatment systems

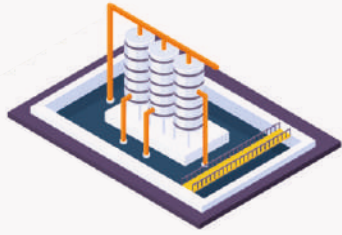


TURNKEY PROJECT

Crown Puretech designs, supplies, installs, tests and commissions numerous turnkeys, tailormade water and waste treatment, filtration and purification solutions



INDUSTRIAL



ETP

STP



WTP

CETP



ZLD

EPC



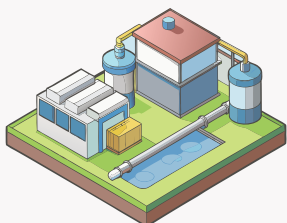
GWTP



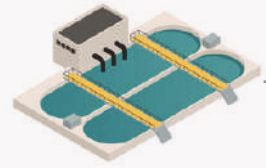
TURNKEY SYSTEM



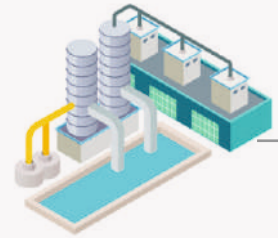
MISTING SYSTEM



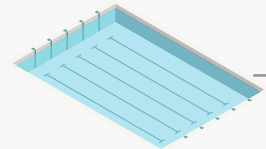
COMM



WTP



R.O. SYSTEM



PRESSURE BOOSTER



WELLNESS SYSTEM



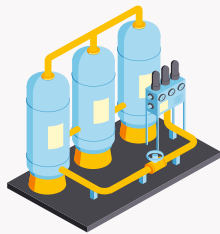
COMMERCIAL

RESIDENTIAL

STP



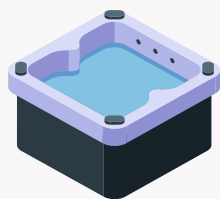
GWTP



POOL FILTRATION



UV/UF
SYSTEM



WATER PARK
SYSTEM



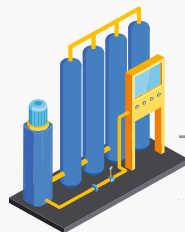
WATER
FOUNTAIN



HYDROGEN
BOTTLE



PRESSURE
BOOSTER



SOFTENER
PLANT



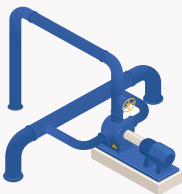
R.O. PLANT



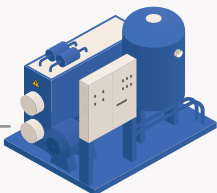
SPA
JACUZZI



ALKALINE
IONIZER



MEDIA
FILTRATION



ALKALINE
JUG

MERITS OF CROWN WATER TREATMENT SYSTEM

Crown stands as a trusted leader in the water purification industry, known for its commitment to delivering clean, safe, and high-quality water solutions. With a strong focus on innovation and reliability, We have built a reputation for offering cutting-edge technology that ensures efficient, sustainable, and cost-effective water treatment. As a brand, Crown prioritizes customer satisfaction through user-friendly systems that combine advanced filtration methods with eco-conscious design.



Easy Installation



Low Maintenance



Destroys Pathogens



Minimal Noise



High Purity
Water



Efficient Energy
Production



Reduced
Wash Water



Standard
Dimensions



Universal
Spares & Parts



Affordable &
Long Lasting



VFD Control
& Standards



Proven &
Tested



FREE OF COST WATER CONSERVATION TECHNIQUES



As global freshwater and drinking water scarcity becomes an increasingly urgent issue, there are numerous methods available to treat and recycle waste water for a variety of uses. While Crown Puretech offers advanced water treatment solutions tailored to different needs, there are also practical and effective strategies for water conservation that can be implemented without the need for specialized treatment systems. These approaches can be applied across residential, commercial, industrial and landscape settings. By adopting disciplined, sustainable practices and taking small, actionable steps, we can significantly reduce water consumption and contribute to the global effort of preserving this vital resource.



@ Kitchen

Use a dishwasher: It uses less water than washing with hands, but only when it's fully loaded to maximize water efficiency. It will save you 1000 gallons per month

Turn off the tap: Don't leave the tap running while scrubbing vegetables, rinsing dishes, or washing hands. Turn it off when not actively using it

Use a bowl for washing vegetables: Instead of running water to rinse vegetables, use a bowl of water to clean them. The water can then be used for plants or other household needs



@ Backyard

Running hose: It lets out 10 gallons of water per minute, use a broom to wash sideways, drive ways, and keep a timer to switch it off while watering your garden

Porous material: Like permeable pavers, gravel, or porous concrete in walkways and patios allows rainwater to be absorbed reducing runoff and preventing flooding

Kids cool down: Switch to a sprinkler instead of using a hose to cool down your kids. It efficiently waters your lawn; conserves water and provides a fun way for kids to stay refreshed!



@ Bathroom

Toilet leakage: They can be silent, test it by putting food coloring in your toilet tank, if it seeps into bowl without flushing, then there is a leakage

Taking a bath: Plug the bathtub before turning on the faucet, then adjust the temperature as the water runs. This conserves water and prevents waste

Brushing, shaving & washing hair: Turn of the tap while not in use, will save up to 4-8 gallons per minute. It equals saving 150 gallons of water per week for a family of 4!



SWIMMING POOL DOMAIN

Swimming pools are communal spaces where individuals converge, each contributing billions of microorganisms, organic contaminants, including skin cells, hair, sweat, and other bodily substances.

As health and hygiene are paramount, it is essential to implement effective disinfection protocols to maintain water quality. Without proper treatment, pool water can quickly develop unpleasant odours and become a breeding ground for waterborne pathogens, facilitating the transmission of infections between swimmers. Consistent, advanced disinfection is crucial to ensure the safety, cleanliness, and overall enjoyment for all users.

Crown Puretech is your comprehensive, one-stop solution for all swimming pool needs, offering expert design, construction, maintenance, and advanced water treatment systems.

POOL AND WELLNESS CATEGORIES

- Private, Semi-Public and Public Pools
- Fountain and Water Features
- Spa and Wellness
- Waterbody, Lily Ponds and Artificial Lakes

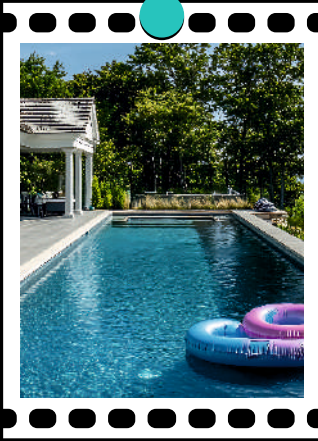
POOL AND WELLNESS SOLUTIONS

- Design and Development
- Construction and Installation
- Analysis and Consultation
- Repair and Restoration
- Re-modernisation
- Operation and Maintenance
- Spares and Equipment
- Beautification

Many people aspire to have a swimming pool in their homes or establishments but are often concerned about the challenges of maintenance.

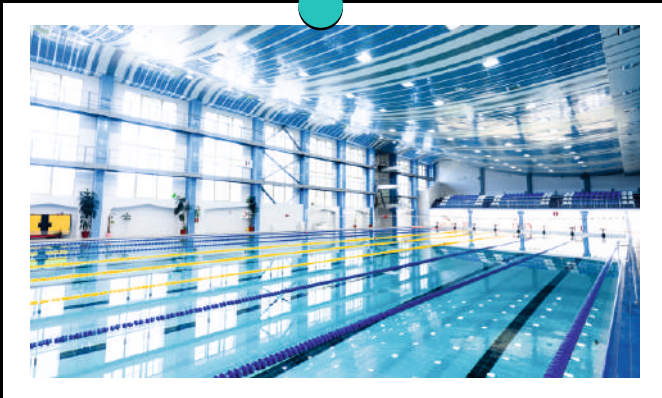
Whether for residences, luxury hotels, or public facilities, Crown Puretech offers a comprehensive solution that combines relaxation and cleanliness through advanced wellness technologies. By utilizing state-of-the-art water purification systems, we eliminate the need for harmful chemicals, ensuring cleaner, safer water. Our solutions are designed to provide a superior, low-maintenance swimming experience that upholds the highest standards of health and efficiency.





Built smart, splash hard!

From top-notch filtration systems to precise chemical dosing, we've got every detail covered. With a splash of innovation and a focus on comfort, we make your pool not just stunning but also safe, sustainable, and a breeze to maintain.

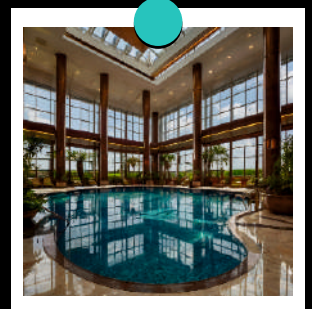
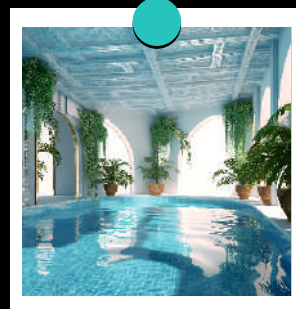
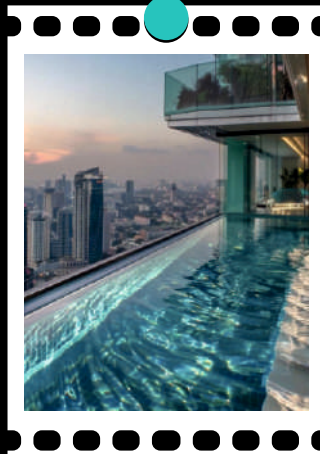


Stay cool, poolside rule



Modular pools, endless cool!

Also known as Portable pools. They are ready to use, with no hassle of construction and has an easy installation process. They are more suitable for modern-day needs



SPA AND WELLNESS

WHIRLPOOL



Crown Puretech provides a water feature designed to create a soothing, swirling water experience. Engineered for efficiency and aesthetics, it seamlessly integrates into pools or water bodies, offering both visual appeal and therapeutic benefits. Ideal for luxury estates, resorts, wellness centres, our whirlpools combine advanced circulation technology with low-maintenance design for a relaxing, high-performance addition to any space.

STEAM

Crown Puretech caters to Steam generators suitable for any industry. With an easy installation process, its user friendly.



They are a great way to relax whilst taking advantage of a range of health benefits – stress relief, body detoxification, soothing aching muscles, and painful joints.

Crown Puretech's premium wellness feature designed for relaxation and rejuvenation. Crafted with high-quality materials, it offers a soothing environment with controlled heat, promoting detoxification, stress relief, and overall well-being. Ideal for luxury residences, spas, and wellness centres, our saunas are built for durability, efficiency, and ease of use, providing a tranquil retreat for the ultimate in relaxation.



SAUNA

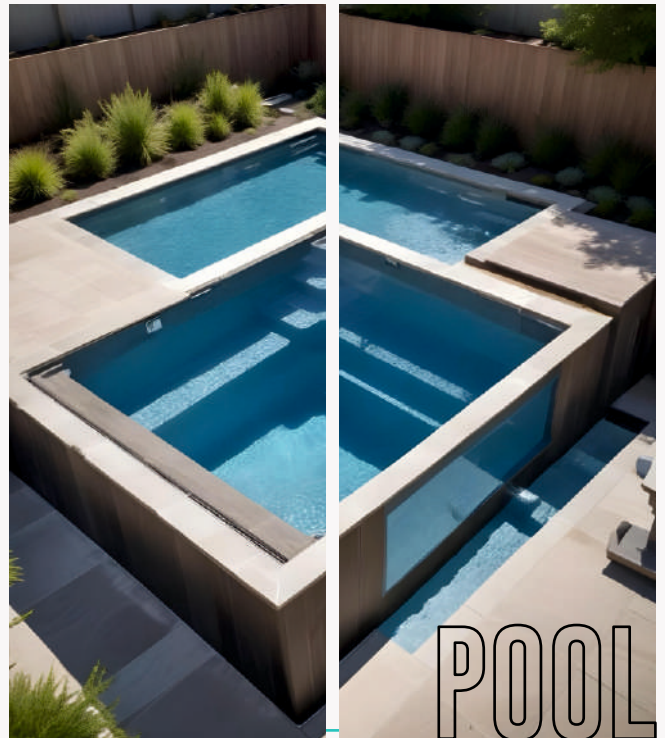


HYDROTHERAPY POOL



Crown Puretech designed a targeted therapeutic benefits through advanced water technology. Equipped with precisely positioned jets and a high-performance circulation system, it offers a range of treatments aimed at alleviating muscle tension, relieving joint discomfort, enhancing circulation, and promoting overall relaxation. Ideal for high-end wellness centres, luxury resorts, and private estates, our hydrotherapy pools are constructed with premium materials to ensure long-term durability, energy efficiency, and ease of maintenance. Tailored to meet specific therapeutic needs, each pool is designed to deliver a personalized, restorative experience that supports both physical recovery and mental well-being.

Crown Puretech is an advanced wellness solution designed to enhance physical and mental well-being. Featuring expertly engineered water currents, temperature regulation, and high-performance circulation, it promotes improved circulation, stress relief, and relaxation. Tailored for luxury wellness centres, resorts, and private estates, the vitality pool delivers a sophisticated therapeutic experience that supports overall health, vitality, and rejuvenation. Built with precision and durability, it offers a seamless design integration, function for a premium, restorative experience.



POOL VITALITY

CROWN READY TO DIP POOLS

QUICK INSTALLATION

- Fast setup
- Minimal disruption
- Ready to use

VARIETY OF DESIGNS

- Different shapes
- Multiple sizes
- Modern style

BUILT-IN FEATURES

- Integrated seating
- Steps for easy access
- Massage jets

IMMEDIATE ENJOYMENT

- Instant relaxation
- Perfect for gatherings
- No waiting period

- Light weight, spacious, and strong structure
- Long warranty on pool structure
- Full installation assistance provided
- Low maintenance due to quality materials
- Guaranteed no water wastage or leakage
- Safety assured with Crown Puretech's pools





SWIMMING PIPELESS FILTRATION SYSTEM

Experience crystal clear water with our advanced swimming pipeless filtration system – efficient, eco-friendly, and hassle-free water purification without the need for traditional piping.

High Quality Material

Retrofit Pool System

Fully Automatic System

LED Illumination System

ADVANTAGES OF PIPELESS FILTER

AN EASY PRODUCT IN TERMS OF

Installation by just hanging it on the wall

Installation in existing pool without pipelines

Single unit does all the expert work

Easy cleaning with just washing the filter bags

Saves energy, reduces power consumption

Swimming pool filter, motor, skimmer, nozzle jet not required in pool

Chemical feeder and the suction sweeping machine not required in the pool

SAVES COST IN TERMS OF

Any kind of piping and plumbing work

Machinery pump room and balancing tank

Filtration management system

SWIMMING POOL TURNKEY WORKS



2

Safety Standards
& Guidance

4

Equipment
Layout &
Planning

1

Water Chemistry
& Analysis

3

Sizing, Process
& Designing

5

MEP Designs
& Approvals

6

Civil Work &
Constructions



Interconnecting
Pipes & Plumbing

7

Water Proofing
& Layering

8



9

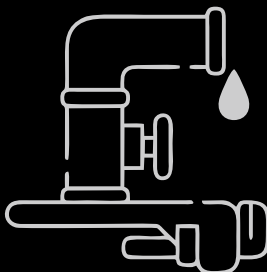


Electrical Work
& Looping



Surface Tiling
& Grouting

10



Supply, Installation
& Inspection

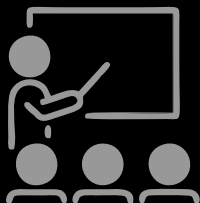
11

12

System Testing
& Commissioning

Onsite Training
& Operations

13



14

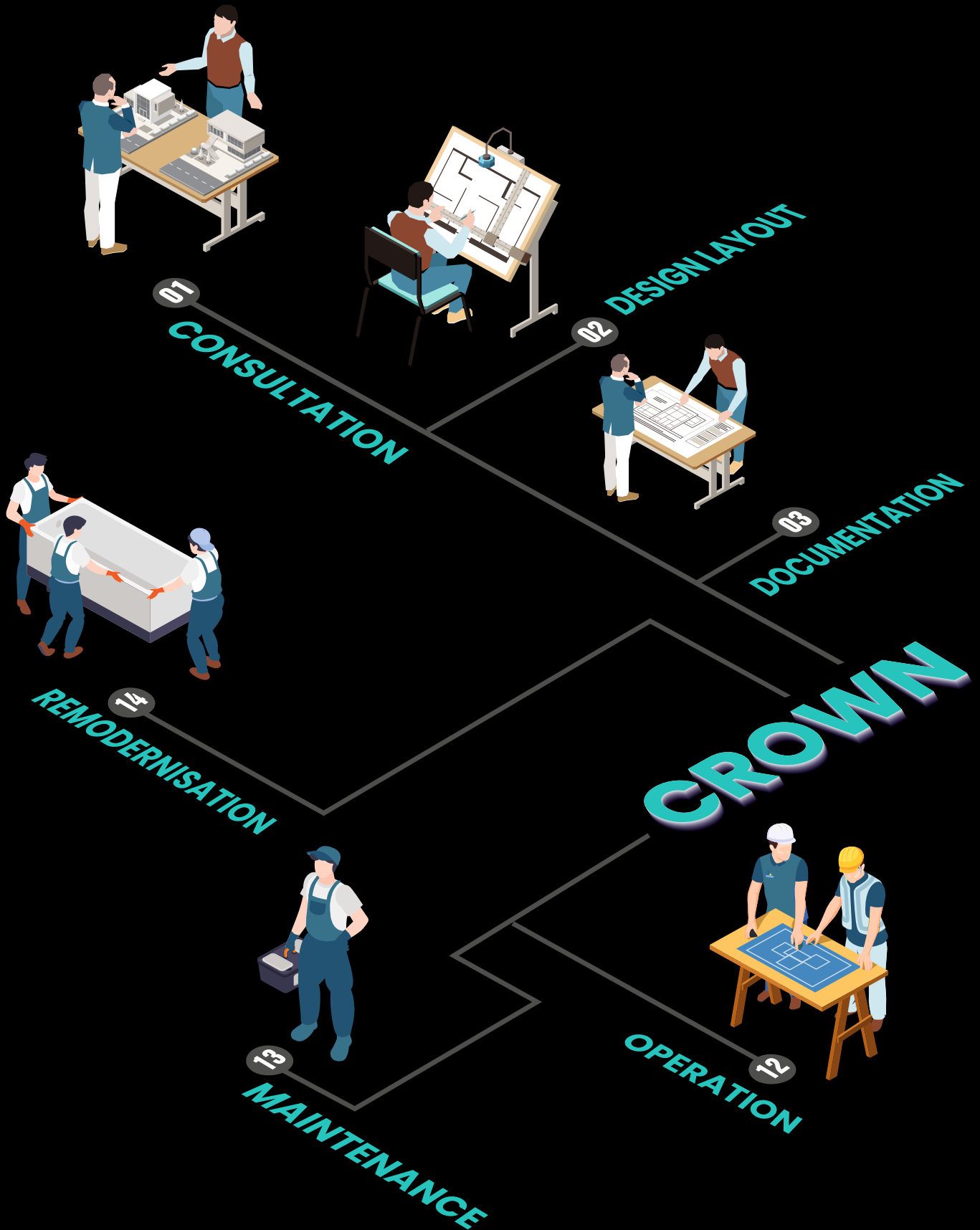
Precautionary
Measures &
Maintenance

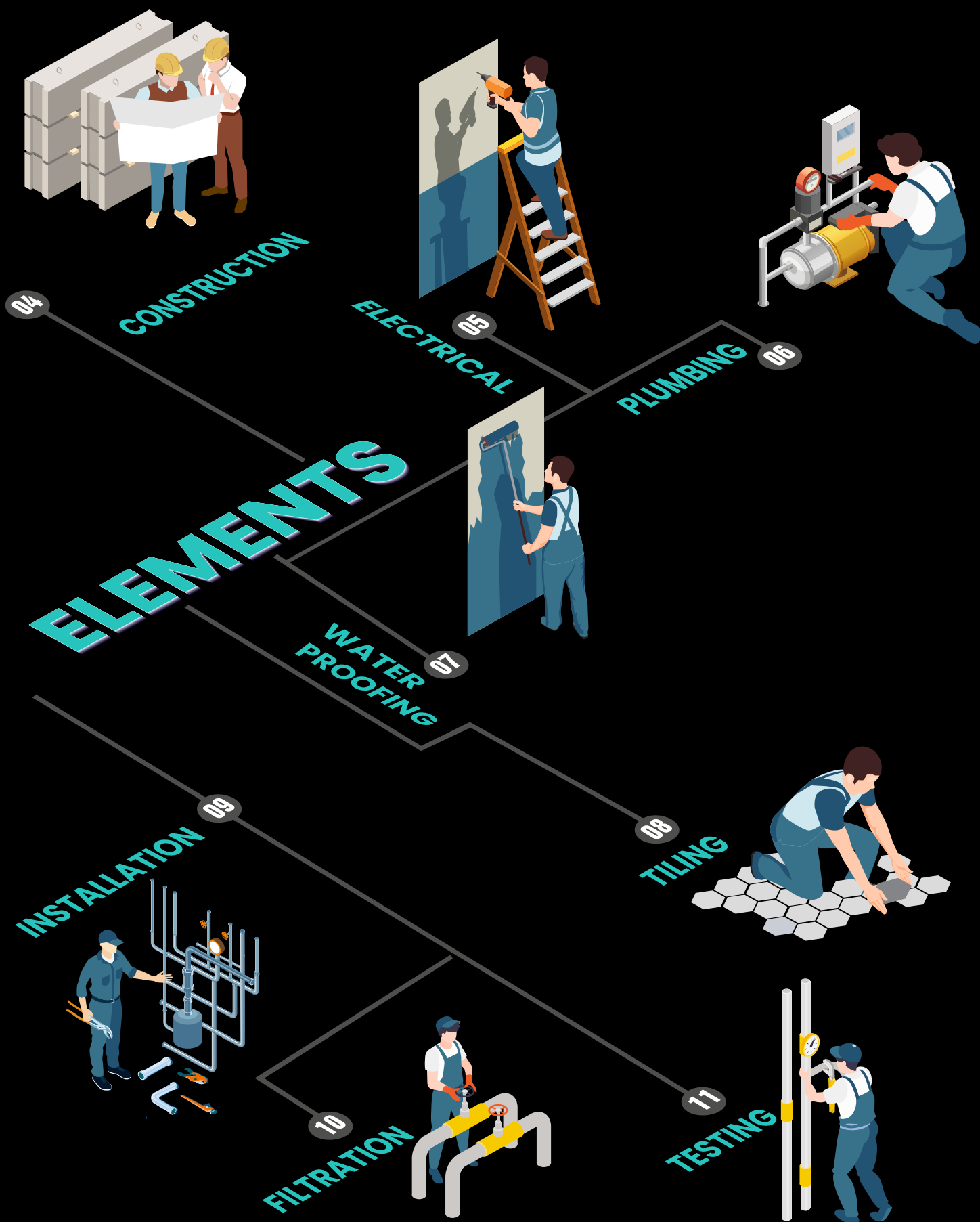
FOUNTAIN & WATER FEATURES





TURNKEY PROJECT DOMAIN







EPC CONTRACTS

WILDLIFE PADDOCK AND ENCLOSURES

Crown Puretech expertise into constructed paddocks, designed to offer secure and sustainable enclosures for the grazing livestock, housing wildlife and exotic species, adhering to specifics of zoos, wildlife reserves, private estates, or specialized sanctuaries. We take a holistic approach to the design, construct, ensuring that the variable structures and functions accommodate the unique needs of different species. Enclosures are built with the utmost attention to safety, comfort, environmental integration, promoting the well-being of all inhabitants. The best durability, offering long-term protection while allowing for efficient management of animal populations. We meet functional and regulatory standards



UNDERWATER EXHIBITS AND AQUARIUMS

Crown Puretech designs cutting-edge underwater exhibits and aquariums, bringing marine, freshwater biodiversity to life in stunning, immersive environments. Our a wide range of ecosystems include vibrant coral reefs, thriving kelp forests, pristine freshwater rivers and diverse aquatic habitats, both above and below ground. Exhibits are meticulously designed to showcase specific species; their ecological roles, fostering a deeper understanding of balance within environments. Thoughtfully engineered walkways, interactive features, and expansive viewing windows, gives unparalleled opportunity for visitors to explore, connect with aquatic world, environmental education and conservation awareness.



ENGINEERING PROCUREMENT CONSTRUCTION



ANIMAL LIFE SUPPORT SYSTEM (LSS)

Crown Puretech's Life Support Systems (LSS) are vital for maintaining animal health in captivity, particularly in zoos and aquariums. These systems effectively replicate natural environments, meeting both physical and psychological needs of the animals. Key components include oxygen supply, removal of carbon dioxide and air filtration, temperature regulation, water quality management, and waste treatment. Additionally, environmental enrichment enhances the well-being of inhabitants. Investing in high-quality Water Filtration systems, including pumps, filters, heaters, and aeration, is crucial for preventing algae's growth and ensuring clean aquatic environments for all residents.



ARTIFICIAL LAKES AND PONDS

Crown Puretech is a leading expert in the creation of artificial lakes and ponds, that seamlessly integrate into landscapes while fulfilling a broad spectrum of functional and environmental objectives. Our designs provide critical water resources, foster recreational spaces that contributes positively to surrounding ecosystem. We adopt a highly customized approach, carefully consideration to project's unique requirements—including water volume, site characteristics, and preferences. From initial planning and precise site selection to innovative design and continuous maintenance, we ensure that every aspect of the project is meticulously crafted for optimal performance, sustainability, and long-term impact.



AQUASCAPING AND MISTING SYSTEMS

Crown Puretech's misting systems efficiently disperse water and other liquids into the air for cooling, controlling dust, and humidifying purposes. Available in high-pressure and low-pressure designs, these systems suit various applications. High-pressure systems create smaller droplets for effective cooling, while low-pressure systems are ideal for less intensive needs. They are utilized in agricultural and irrigation settings, greenhouses and nurseries to promote plant health, and enhance the aesthetics of water bodies and fountains. Additionally, they improve comfort in animal enclosures and paddocks, enhancing outdoor ambiance for visitor enjoyment.



ROCKWORK THEMING AND FACADES

Crown Puretech through strategic global partnerships, has expanded its realm of landscaping, creation of bespoke rockwork and themed projects. We design and execute highly realistic landscapes, intricate rock formations, aquariums, murals, facades, and scenic artworks that transform spaces into captivating environments. Leveraging advanced digital rendering techniques, we bring complex designs to life, particularly in zoos, theme parks, and other immersive settings. These cutting-edge technologies enable us to craft visually striking and engaging environments that enhance the visitor experience, while ensuring precision and creativity in every aspect of the design and execution process.



ENCLOSURE MAINTENANCE AND DISINFECTION

Crown Puretech implements maintenance plans to ensure the long-term sustainability of lakes and ponds. This involves regular inspections, cleaning, and vegetation management. We monitor ecosystem health continuously and adjust management strategies as necessary, applying disinfection protocols for areas such as animal enclosures and water bodies. Our approach includes selecting non-toxic or herbal disinfectants, following established cleaning protocols, managing quarantine areas to prevent disease spread, and disinfecting tools and equipment, including animal carriers, to maintain a safe and healthy environment for all inhabitants.



PET WATER BOTTLING SYSTEMS

Crown Puretech adopts advanced techniques and cutting-edge machinery to produce PET bottles for various applications. We offer fully customized solutions for the Food and Beverage Industry, including mineral water bottles, aerated drinks, and liquid pouches. Our end-to-end services encompass blow moulding, where bottles are designed per customer specifications, and rinsing, filling, and capping from RO plants based on neck sizes. Additionally, precise labelling with all necessary details, batch coding for manufacturing and expiry dates, and an available shrink packaging machine for bulk bottles.



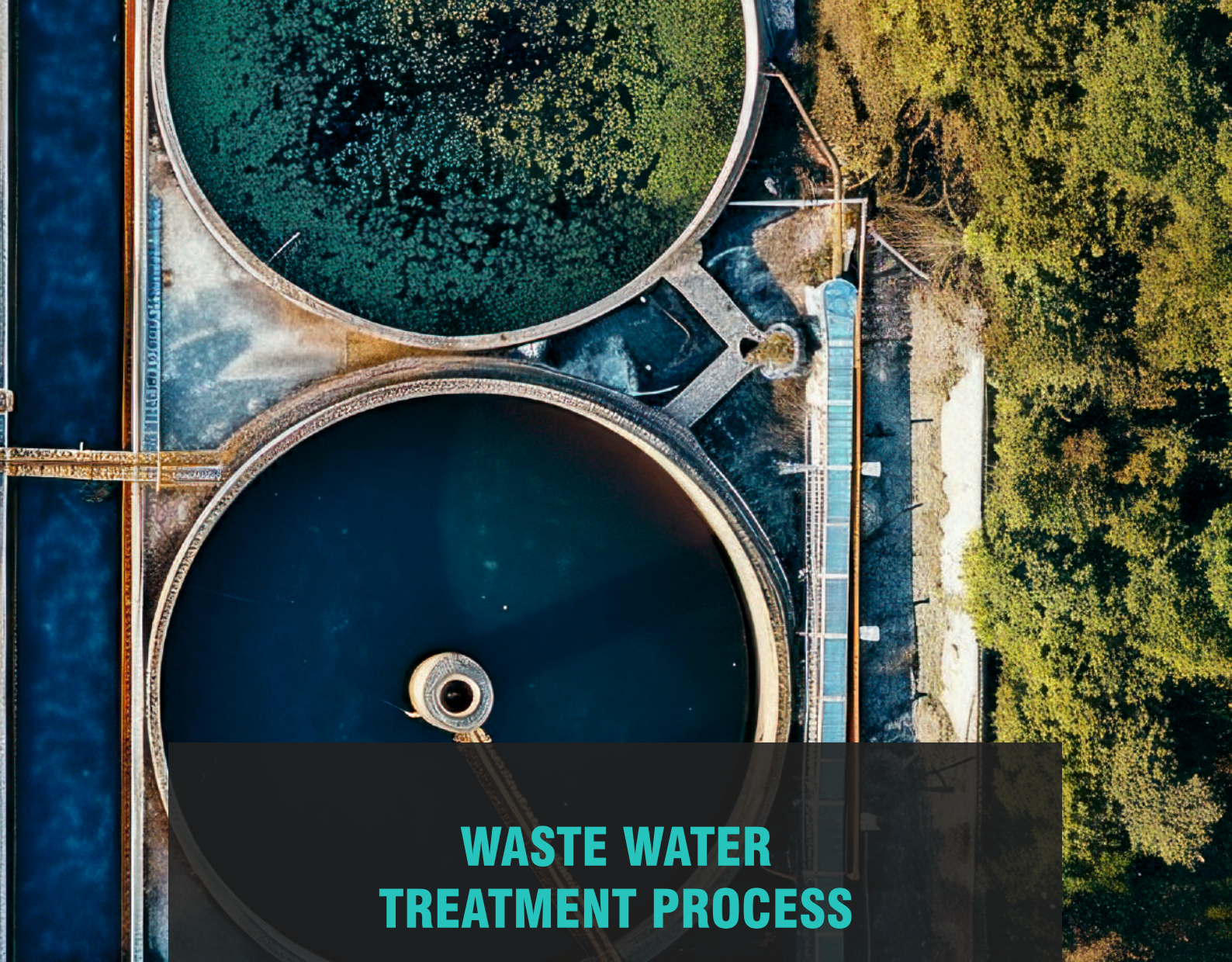
WASTE WATER TREATMENT DOMAIN

“

Crown Puretech offers a comprehensive range of Sewage, Grey Water and Effluent Treatment Plants, Zero Liquid Discharge Systems that are highly effective in overcoming major Environmental problems.

Waste water is a combination of liquid and water-carried waste from various sources, including household and municipal water, industrial discharges, agricultural runoff, rainwater inflows, and infiltrated water. The main constituents of waste water include pathogens, refractory organics, dissolved inorganics, nutrients, and heavy metals. waste water is typically categorized into two types: Sewage and Effluent. Grey water refers to waste water from residential sources, excluding toilet waste, while black water pertains to waste water from toilets. Effluent is industrial waste water, often containing chemicals, dyes, and hazardous materials, requiring specialized treatment before disposal or reuse.

Crown Puretech has developed an innovative and economical system for waste water with help of best-in-class technology and cutting-edge tools, it is believed that the entire biological and chemical requirement goes down and the discharge from sewage and effluent plants provide good quality treated water.



WASTE WATER TREATMENT PROCESS

MBBR (Moving Bed Bio Reactors)

MBR (Membrane Bio Reactors)

SBR (Sequential Batch Reactors)

EC (Electro Coagulation)

CC (Chemical Coagulation)

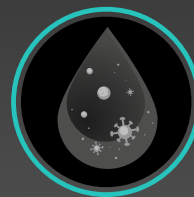
ASP (Activated Sludge Process)



BLACK WATER



GREY WATER



EFFLUENT WATER



SEWAGE TREATMENT PLANT (STP)

Sewage Treatment Plants (STPs) are our forte, we specialize in designing and implementing efficient tailored solutions for both residential and commercial applications, ensuring effective treatment of waste water to meet environmental standards. Our advanced systems reduces pollutants like BOD, COD, and TSS, delivering clean water for safe disposal or non-potable reuse.

INDIVIDUAL | RESIDENTIAL | COMMERCIAL | MUNICIPAL

OUR EXPERTISE: Includes designing sewage treatment plants in RCC for both commercial and residential buildings. We also offer mild steel tanks with FRP lining and fibre construction for easy installation and commissioning.

EFFLUENT TREATMENT PLANT (ETP)

An Effluent Treatment Plant (ETP) treats industrial waste water to remove hard contaminants like chemicals, heavy metals, and organic matter. It uses physical, chemical, and biological processes to ensure the effluent meets environmental standards before discharge or reuse, helping industries minimize their environmental impact.



SINGLE PRODUCT INDUSTRY | SPECIALISED UNIT

OUR EXPERTISE: Designing and commissioning clarifiers, filters, aeration, coagulation, and settling systems for industrial waste water from sectors like chemicals, pharmaceuticals, refineries, and lactates.

GREY WATER TREATMENT PLANT (GWTP)

Grey water, accounting for 50–80% of household waste water, comes from sources like kitchen sinks, dishwashers, showers, excluding toilet waste. While it contains food, grease, hair, and cleaning agents, it is typically safe for reuse. With proper treatment, grey water can be efficiently repurposed for irrigation, supporting water conservation and sustainability.

RESIDENTIAL | COMMERCIAL

OUR EXPERTISE: Providing advanced solutions for complete water recovery and solid waste reduction, ensuring compliance with environmental standards while optimizing costs



ZERO LIQUID DISCHARGE SYSTEM (ZLD)

Zero Liquid Discharge (ZLD) is an advanced treatment approach aimed at maximizing water recovery and minimizing waste. It reduces contaminants to solid waste, ZLD systems are highly challenging due to increased cost, treatment complexity as waste water becomes more concentrated, making it a demanding solution for industries committed to sustainable practices and regulatory compliance.

DESALINATION PLANTS | REFINERIES AND PETROCHEMICALS | TEXTILE AND DYEING UNITS

OUR EXPERTISE: Offering advanced solutions for complete water recovery and waste minimization. Our expertise includes designing and implementing efficient ZLD processes that convert waste water into reusable water and solid waste, meeting stringent environmental standards while optimizing operational costs for industries



COMMON EFFLUENT TREATMENT PLANT (CETP)

A Common Effluent Treatment Plant (CETP) treats waste water from multiple industries using physical, chemical, and biological methods. It centralizes treatment to improve resource efficiency, reduce environmental impact, and ensure compliance with regulations. CETPs protect ecosystems, public health, and support sustainable industrial development.

DEVELOPMENT CORPORATION | INDUSTRIAL ESTATES | MANUFACTURING ZONES

OUR EXPERTISE: Designing and implementing efficient waste water treatment solutions, focusing on CETPs for various industries. Our approach integrates advanced treatment methods to ensure effective pollutant removal, regulatory compliance, and sustainability, while supporting industrial growth and protecting public health and the environment.



FINAL USE OF TREATED WATER

Recycled water offers a sustainable solution to supplement water supplies and reduce environmental impact. Its end uses include drinking water (where treated to appropriate standards), industrial applications, irrigation, river flow maintenance, and recreational purposes. Additionally, it can be safely returned to the environment, supporting ecological balance and conserving natural resources.

Recycle & Reuse

Recycled waste water into drinking requires further rigorous process, though economical uses are Landscaping, Flushing, Washing, Construction etc.

Waste to Energy

Treated waste water is converted through various technologies into non-recyclable waste into usable forms of energy including heat, fuels and electricity.

Types of Waste Water	Treatment	Reuse of Water
Grey Water	E.C., C.C.	Irrigation, Flushing, Washing
Black Water	M.B.B.R., M.B.R., S.B.R., A.S.P.	Irrigation
Municipal Water	M.B.B.R., S.B.R.	Irrigation
Effluent Water	M.B.B.R., M.B.R., E.C., C.C.	Drain Out

PLANT MODULE

Conventional System

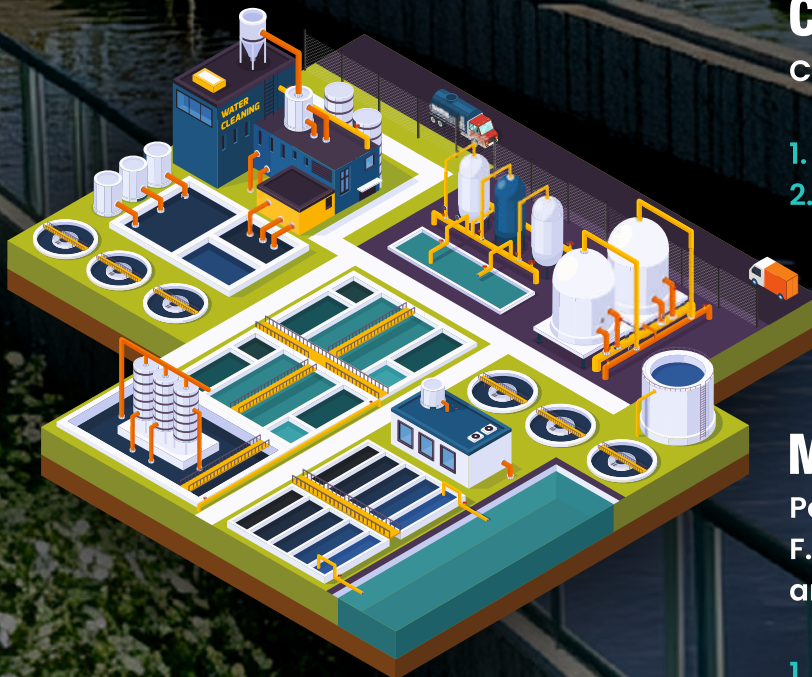
Civil based, constructed of RCC on site

1. Above Ground
2. Under Ground

Modular System

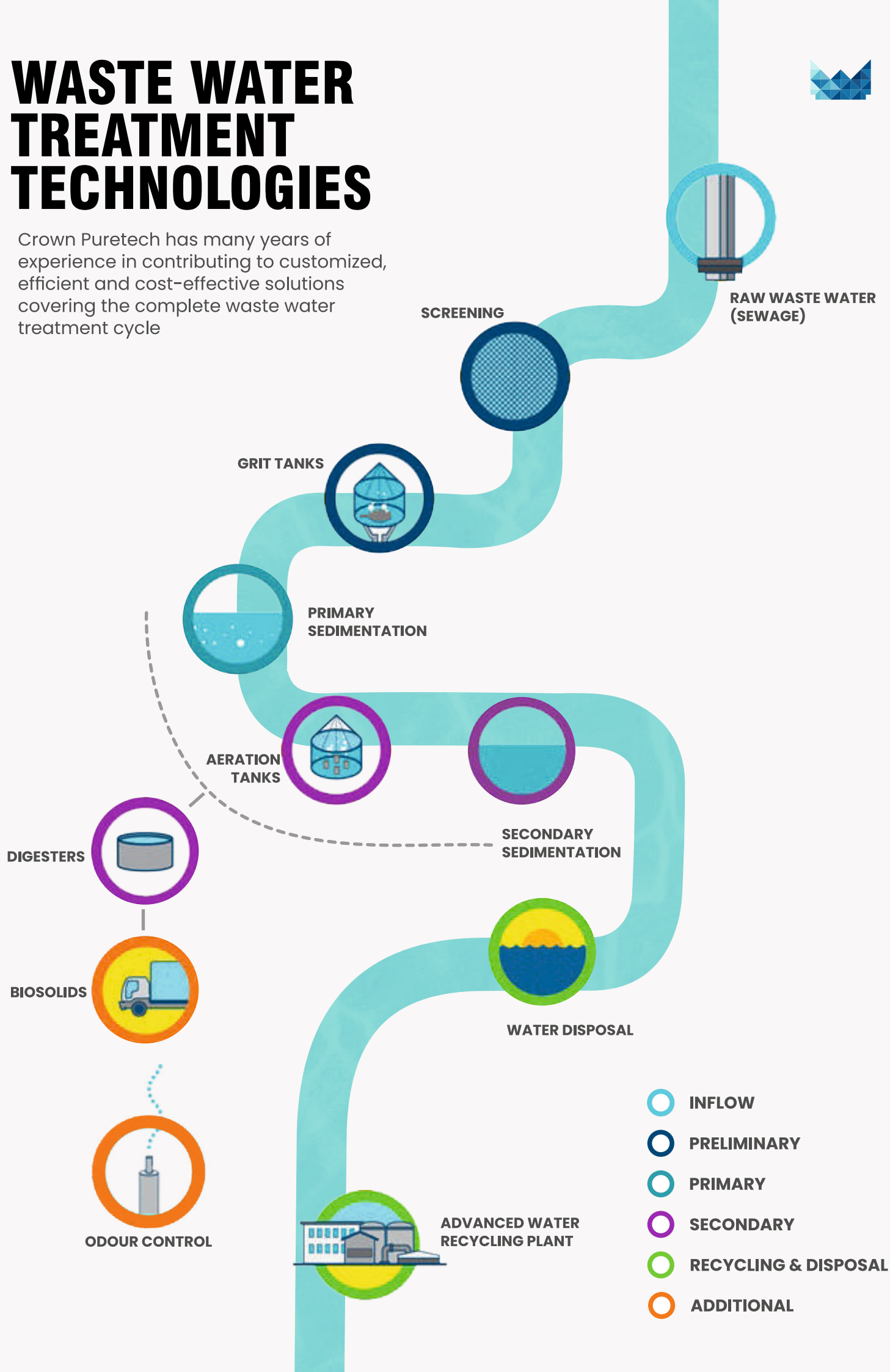
Portable based, constructed of F.R.P. / Mild Steel or Stainless Steel and transported to end user's site

1. Containerized
2. Non – Containerized



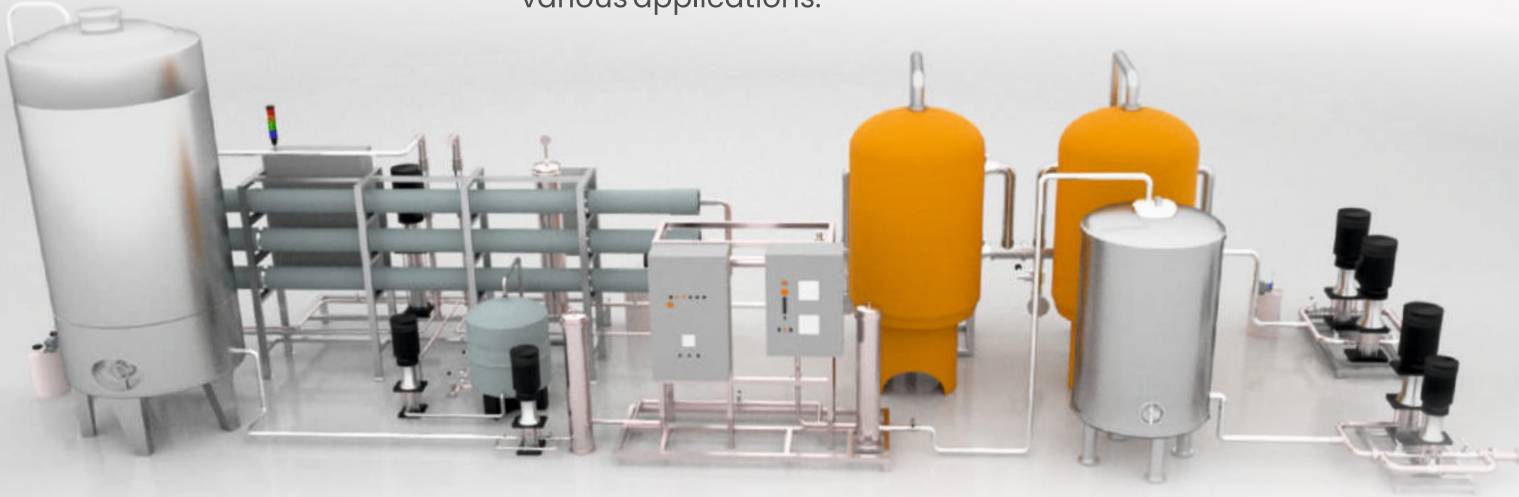
WASTE WATER TREATMENT TECHNOLOGIES

Crown Puretech has many years of experience in contributing to customized, efficient and cost-effective solutions covering the complete waste water treatment cycle



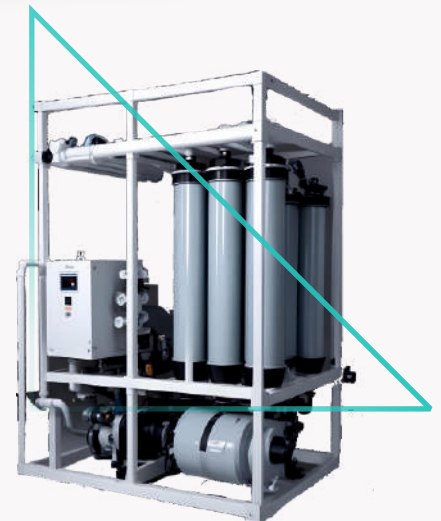
WATER TREATMENT DOMAIN

Raw water sources has become increasingly scarce, surface water is often unsuitable for drinking, and the potential for borewell extraction is limited by the required depth for drilling. Given water's ability to dissolve a wide range of substances, it is essential to treat water before it can be safely used for domestic, agricultural, or industrial purposes. waste water must be treated before release, and recycled water requires proper purification. We offer a comprehensive range of advanced water treatment technologies to address these growing needs, ensuring safe, sustainable water use across various applications.



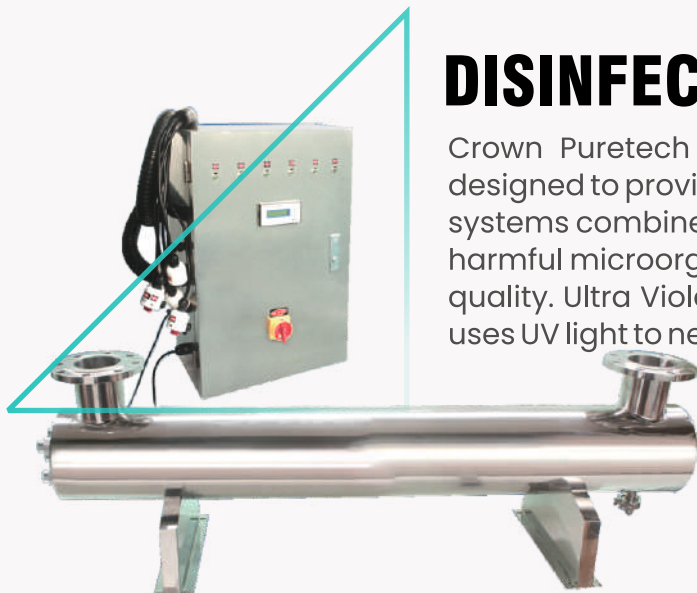
REVERSE OSMOSIS

Crown Puretech designed Reverse Osmosis (R.O.) systems to provide high-efficiency water purification by using a semipermeable membrane to remove contaminants, including salts, chemicals, and microorganisms. This technology is widely used in various applications, such as producing safe drinking water and meeting the specific needs of industries requiring high-purity water. Our R.O. systems ensure optimal performance and long-term reliability through custom design and regular maintenance.



DISINFECTION FILTRATION

Crown Puretech offers advanced Disinfection Filtration Systems designed to provide safe, clean water for various applications. These systems combine filtration with disinfection technologies to remove harmful microorganisms, bacteria, and viruses, ensuring high water quality. Ultra Violet (UV) and Ultra Filtration (UF) Disinfection, which uses UV light to neutralize pathogens without chemicals; Ozone and Oxygen, which introduces ozone to purify water by breaking down contaminants. Each system is tailored to meet specific water treatment needs, offering reliable solutions for both residential and industrial uses.





HYDROGEN BOTTLE

Crown Puretech provides hydrogen water bottle which utilizes advanced electrolysis to infuse water with molecular hydrogen, offering antioxidant and anti-inflammatory benefits. Typically made from durable, BPA-free materials, Hydrogen bottles are portable, user-friendly, features easy-to-use controls and safety mechanisms. This portable solution helps neutralize free radicals, improve hydration, and support overall health. The bottle's design ensures convenience and high-quality hydrogen-rich water on the go.



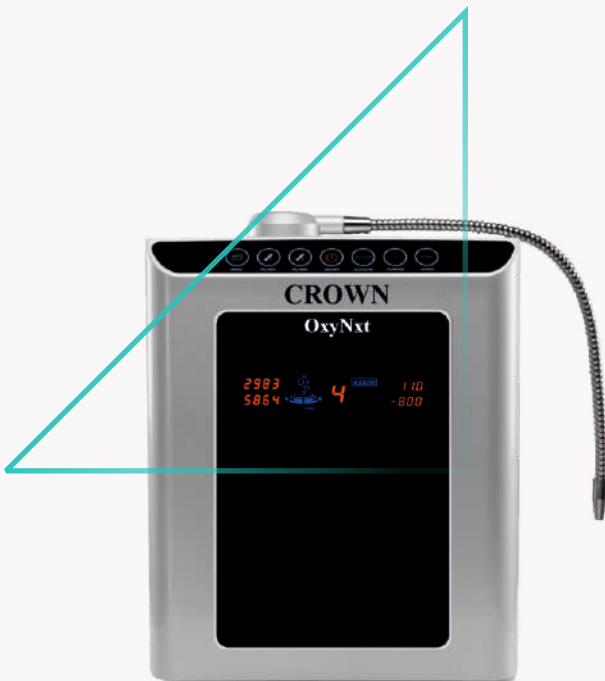
MEDIA FILTRATION

Crown Puretech offers advanced Media Filtration Systems designed for effective water purification across various applications. These systems utilize different filtration media, such as sand, activated carbon, and specialized materials, to remove impurities from water. The Pressure media filter is ideal for removing suspended solids and larger particles, while Multi grade Filters combine multiple media to enhance filtration efficiency for higher-quality output. Activated Carbon Filters are used to eliminate chlorine, organic compounds, and undesirable odours.



ALKALINE WATER

Crown Puretech offers cutting-edge alkaline water ionizers designed to improve water quality by enhancing its pH level and providing beneficial minerals. These ionizers utilize advanced electrolysis technology to produce ionized alkaline water that is rich in antioxidants, promoting better hydration and overall health. Our products are equipped with multiple filtration stages to remove impurities, ensuring clean, safe water for daily consumption. Additionally, the units are easy to maintain, with automatic cleaning systems to prevent scale buildup, and are designed for both aesthetic appeal and practicality in various home or commercial environments.



PRESSURE BOOSTER

Crown Puretech's Pressure Boosting System is designed to provide consistent and reliable water pressure across a variety of applications, including residential, commercial, and industrial sectors. The system incorporates energy-efficient pumps that ensure optimal water flow, while intelligently regulating pressure based on real-time demand. This reduces energy consumption and operational costs. Compact, modular design makes installation and maintenance easy. With durable construction, these products are engineered for long-term reliability and minimal maintenance, offering a cost-effective solution to ensure stable water pressure.



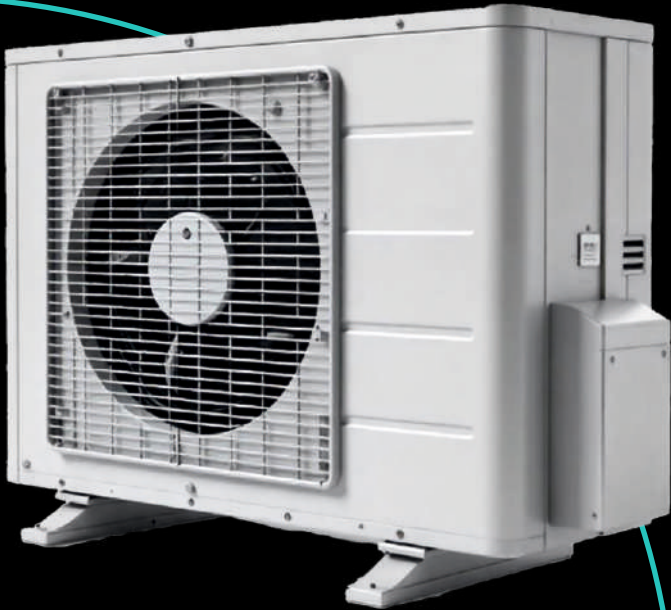
WATER SOFTENER

Crown Puretech offers advanced water softening solutions to address the challenges posed by hard water. Our water softeners use ion-exchange technology to remove calcium and magnesium ions, which are responsible for water hardness, preventing scaling and damage to appliances, pipes, and industrial equipment.

The systems are available in various configurations, including salt-free models, providing users with energy-efficient and low-maintenance options. Crown Puretech's water softeners ensure high-quality, softened water for both residential and industrial applications, contributing to enhanced operational efficiency and improved water quality.



HEAT PUMPS



Crown Puretech offers high-performance heat pump systems designed to efficiently regulate temperature for both commercial and residential applications. Our heat pumps are engineered to provide reliable heating and cooling for swimming pools, using energy-efficient technology to reduce operating costs while ensuring optimal performance. These systems are built to last, consume less power, and deliver high efficiency, making them a sustainable choice for pool temperature control. With Crown Puretech's heat pumps, you can enjoy consistent water temperatures while minimizing energy use.



WATER CONDITIONER

Crown Puretech offers water conditioners designed to prevent scaling and protect plumbing systems from the effects of hard water. These systems use advanced technology to alter the properties of calcium and magnesium ions, preventing them from forming scale deposits.

Water conditioners from Crown Puretech provide an eco-friendly and low-maintenance alternative to traditional water softeners, offering effective treatment without the use of chemicals or salt. This makes them a sustainable solution for improving water quality in both residential and commercial applications.

SERVICE AND SOLUTIONS

We design systems to handle the unique challenges of high purity water systems – to meet the specific needs of the plant and the water quality required. It is a fast-track world, and to be able to comply with the demanding situations that may come upon our client's side, we assist them round the clock to effectively sort the problems as soon as they arise.



CONSULTATION AND DESIGN

Crown Puretech designs innovative, cost-efficient, sustainable solutions that ensure long-term reliability. We work collaboratively with clients, offering a comprehensive suite of design and construction options to meet unique requirements and objectives.



ONSITE TRAINING

Crown Puretech offers tailored onsite training to ensure your team is fully equipped to operate and maintain water treatment systems effectively. Our expert-led sessions provide hands-on experience and in-depth knowledge of operations, troubleshooting, and maintenance, customized to your needs.



WATER AUDIT AND ASSESSMENT

Crown Puretech provides expert services to evaluate efficiency, water quality. Our thorough analysis identifies opportunities for optimization, cost reduction, and regulatory compliance. Actionable insights and recommendations tailored to enhance water quality management, system performance.



OPERATION AND MAINTENANCE



Crown Puretech delivers comprehensive O&M services tailored to maximize the efficiency and lifespan of systems. We maintain system integrity and thereby achieve long-term cost savings

- **Routine maintenance**
- **Rapid response support**
- **Enhance system efficiency**
- **Technical Expert Supervision**
- **Preventive Measures**
- **Water Chemistry Analysis**

ANNUAL MAINTENANCE CONTRACTS



Crown Puretech's AMC ensures reliable and efficient operation. The goal is to provide hassle-free operations and maintain optimal system performance, extend equipment lifespan

- **Monthly Maintenance**
- **Complain Attendance**
- **Checking and Testing**
- **Consumables and Spares**
- **Preventive Steps**
- **Standard Methodology**

PRECAUTIONARY MEASURES



Crown Puretech focus on ensuring safe system by water assessments, tailored system designs, and regular preventive methods. We prioritize sustainability by eco-friendly technologies to minimize environmental impact.

- **Standard Parameters**
- **Building Solutions**
- **Frequent Inspection**
- **Team Training**
- **Apt Recommendation**
- **Preventive Awareness**

RE-MODERNIZATION AND REFURBISHMENT



Crown Puretech upgrades existing treatment systems, outdated equipment, improve efficiency, and integrate modern technologies to enhance performance and compliance with current standards, thereby extending system's lifespan

- **Retrofitting and Renovation**
- **Consultation and Discussion**
- **Repairs and Replacements**
- **Modern Approach**
- **System Updating**
- **Enhanced Performance**

APPLICATION INDUSTRIES

Water is a critical resource for the production of goods, energy generation, socio-economic development, and the sustenance of healthy ecosystems. At Crown Puretech, we specialize in biotechnological processes and innovative products designed to purify water for a diverse array of applications.

With a clear and unwavering purpose, we are committed to delivering comprehensive waste water treatment solutions tailored to meet the specific needs of every consumer. Our focus extends to all individuals, industries, and buildings generating waste water, effectively covering all entities that rely on water consumption.

Leveraging advanced technologies, we offer a full spectrum of water purification solutions and services across various sectors. Our expertise ensures the highest standards of water quality, sustainability, and environmental responsibility.



Factories & Warehouses



Estate & Industrial Corporation



Rubber & Plastic Industries



Power Plant & Cooling Towers



Pet Bottling Plants



Under Construction Sites



Educational & Research Industries



Laboratories & Pharmaceutical



Food & Beverage Industries



Banking & Financial Institutes



Clinics & Hospitals



Water Park & Theme Park



Hotels & Resorts



Spa & Wellness



Cafes & Restaurant



Private & Public Premises



Weekend Homes & Farm House



Agriculture & Horticulture



Zoo's & Animal Enclosures



Aquariums & Underwater Exhibits

CONSUMABLE ACCESSORIES



FILTER MEDIA

ANTHRACITE | GLASS | CARBON
GRAVELS | BIO-MEDIA

CHLORINE DISINFECTANT

TCCA-90 | IMPORTED
GRANULES | LIQUID | TABLETS

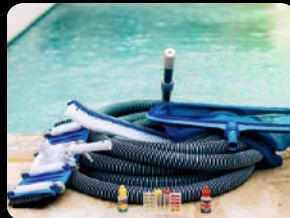


HERBAL NON-TOXIC DISINFECTANT

WATER SHIMMER | PARAMETER ADJUSTER
PH CONTROLLER | ALGAECIDE

MANUAL CLEANING KIT

VACUUM HEAD | HOSE PIPES
BRUSHES | TESTING KITS

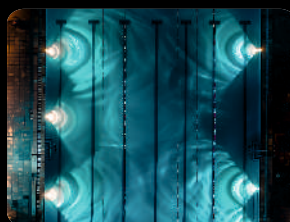


AUTOMATIC PROTECTORS

ROBOTIC CLEANER | AUTO DISINFECTANT
ROBOTIC POOL COVERS

UNDERWATER LED LIGHTS

NICHE | WALL-NOZZLE MOUNTED
STAINLESS STEEL | COLOR CHANGING



PRESTIGIOUS CLIENTELE



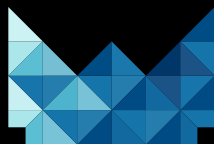
We deliver exceptional solutions across diverse industries, earning the trust of most prestigious clients through our unwavering commitment to excellence, continuous growth, and the invaluable feedback we receive from our clients.



& many more...



We're Here !
just a heads up



+91 98987 79911 | +91 63567 79911 | +91 96877 91119 | 02717 403591
sales@crownpuretech.com | info@crownpuretech.com | www.crownpuretech.com

REGISTERED OFFICE

B 802-803, Swati Trinity, Applewoods Township, S. P. Ring Road, Shela, Ahmedabad, Gujarat 380058

BRANCH OFFICE

301, Peoples Plaza, Nr. Memnagar Fire Station, Navrangpura, Ahmedabad, Gujarat 380009

FACTORY PREMISE

Plot-54, Suvas Global Hub One, Opp. Bharat Benz, B/h Zydus Cadila Plant, Moraiya, Gujarat 382213